



# TAIWAN TECH

National Taiwan University of Science and Technology



# TAIWAN TECH

National Taiwan University of Science and Technology



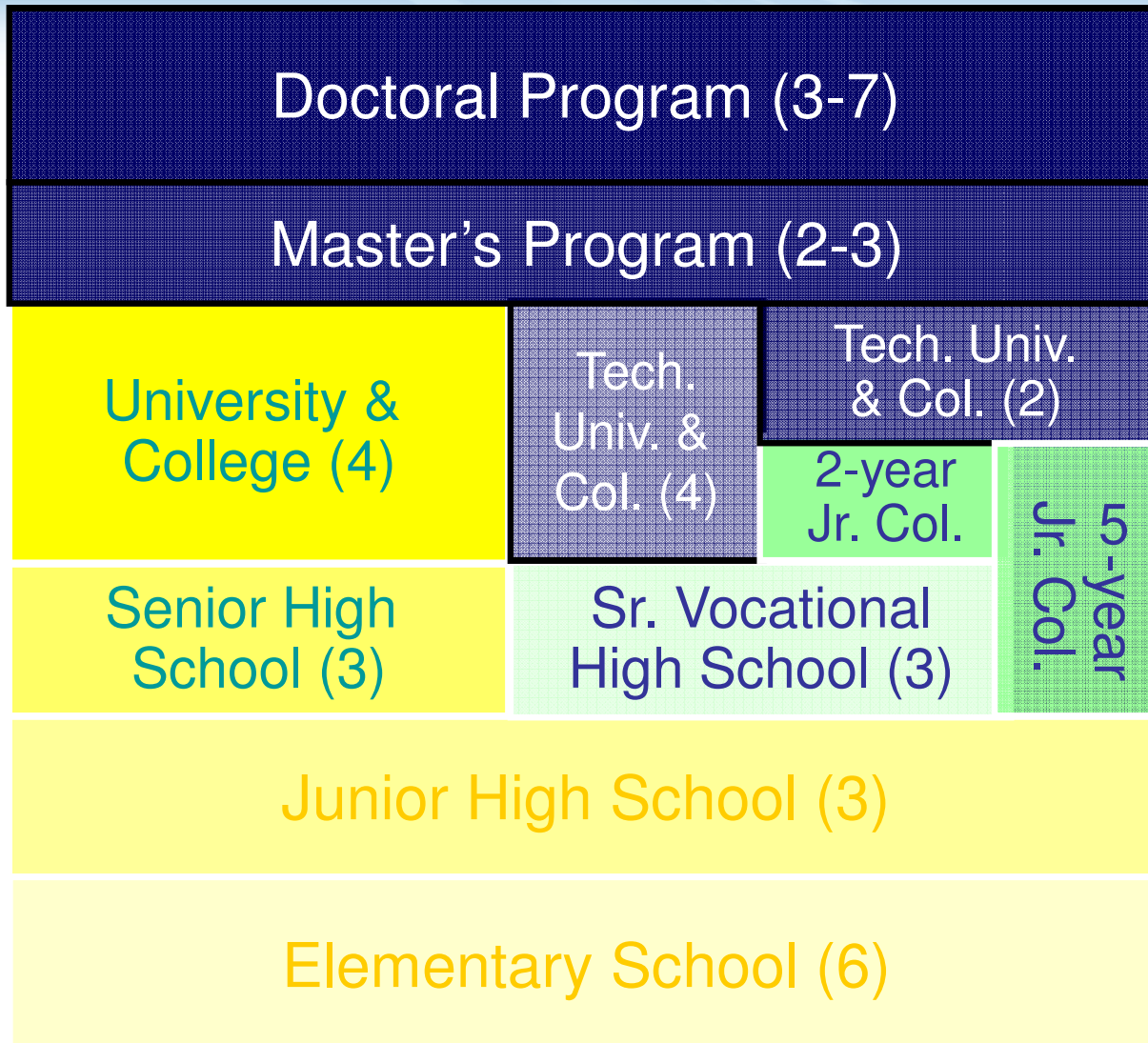
By Prof. Ray-Guang Cheng  
Email: [crg@mail.ntust.edu.tw](mailto:crg@mail.ntust.edu.tw)







# Taiwan's Education System



1<sup>st</sup> Semester: Sep. ~ Jan.  
2<sup>nd</sup> Semester: Feb. ~ June

# Accommodations

- Two dorms for male and one dorm for female, 5-6 people in one room. Sanitary equipment of male's dorm is in public area. Dorm for female is a suite with toilet and bathroom. International student can choose to live with local students or foreign students.
- Everyone has private desk, bed, wardrobe, desk lamp, and free internet service. Every room is equipped with air-conditioner (energy charge by each student) and fan.
- Every floor has coin-operated washing machine, coin-operated drier, and dewaterer. Every dorm has comfortable lounge (Lounge has TV, newspaper, drinking, public telephone), studying room.



# Accommodations



# Living Expense

- Dormitory:
  - On-campus dormitory: ~200 EUR/semester (excluding summer and winter vacations)
  - Out-of-campus: room in a flat/house: 230~350 EUR/month
- Food and meals: Food: 100+ EUR/month
- Insurance:
  - Student Insurance ~10 EUR
  - National Health Insurance ~140 EUR



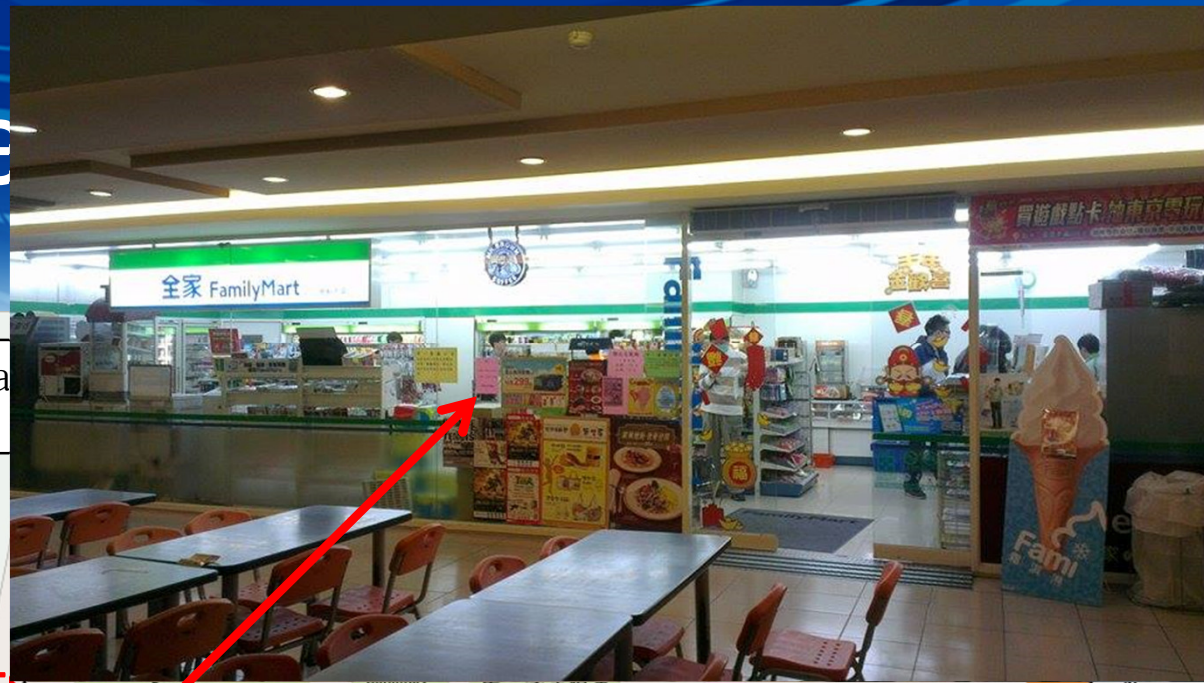




Re

National Ta

Food Courts









# Attractions



**Taiwan** is traditionally called the "ILHA FORMOSA". It's just southeast of continental Asia. To its north is Japan and the Okinawa Islands, and to its south lie the islands of the Philippines. Taiwan is a communications hub for Asia, with convenient flights to all parts of the region. Indeed, its strategic location makes Taiwan ideally suited for commerce as well as tourism.



Photo provided by National Palace Museum







# Taipei 101

Taipei 101 Observatory.  
The Tuned Mass Damper  
can be seen from 89F  
floor and its by far the  
largest in the world.







## Liberty Plaza (as know as Chiang Kai-shek Memorial Hall)

Day and night view of the Liberty Plaza (as know as Chiang Kai-shek Memorial Hall). Two identical buildings are the National Theater on the left and the Concert Hall on the right. Did you notice the difference?





Photo by 郭欣彥

## National Palace Museum      The Zhishan Garden

Next to the National Palace Museum, covering an area of 1.88 hectares, is based on traditional Chinese garden building techniques, and is filled with a literary atmosphere. It reflects the garden styles of the Sung and Ming dynasties. Some describe the Chinese garden as a euphemistic poem or a long unfolding landscape painting.





Photo by 郭欣彥

# Dihua street

Although a relatively calm street during most times of the year, Dihua street bustles with people during the two weeks before Chinese New Year. The residents of Taipei flock to the street during these times to buy necessities for the festivities, while tourists visit for the traditional Fujian decorations, atmosphere, and architecture.





# Beitou Hot Spring

Most of the public outdoor hot springs in the Beitou area are modeled more after European spa centers and require swimsuits since you will be bathing in mixed company. Finding a real traditional Japanese style public bath is increasingly rare. Take a peek and check before peeling off all your clothes.





## Beitou Geothermal Valley

## Beitou Library

Both are located beside Beitou Hot Spring Park.

Geothermal Valley is one of the sources supplying the area's hot springs. The sulfuric steam that blankets the valley year-round gives the valley a frightening quality, giving rise to nicknames like "Ghost Lake." The springs here have the highest temperatures of any in the Datunshan volcano group.

Beitou library using a lot of wood as the primary building material, was elected in 2007 in Taiwan Architect Awards.



## Lake cycling trail



## Sun Moon Lake

Sun Moon Lake scenic area got its name from the unique terrains that look like sun on one side and crescent moon on the other.

Sun Moon Lake features the only full-range 3D tours (lake, sky and land) in Taiwan. The lake cycling trail has been dubbed by CNGO, CNN as one of the most beautiful cycling trails in the world.

The Sun Moon Lake Ropeway starts from Formosan Aboriginal Culture Village and ends at the Ita Thaw Settlement in Sun Moon Lake for a total distance of 1.87 km. The 7-minute ropeway ride allows visitors to view the beautiful sceneries of the Sun Moon Lake from the sky.





**Forest railway**



**Tsou aborigines**



## Alishan National Scenic Park

Alishan National Scenic Area has an area of 41,520 hectares and stretches across four townships: Fanlu, Zhuqi, Meishan and Alishan. It is renowned far and wide for its cloud sea, sunrises and sunset glow and also has enchanting gorge waterfall, sakura cherry blossom and bamboo grove scenery. The scenic area's unique Z-shaped forest railway (nicknamed "train hits the wall ") and the culture of the local Tsou aborigines add to Alishan's uniqueness.

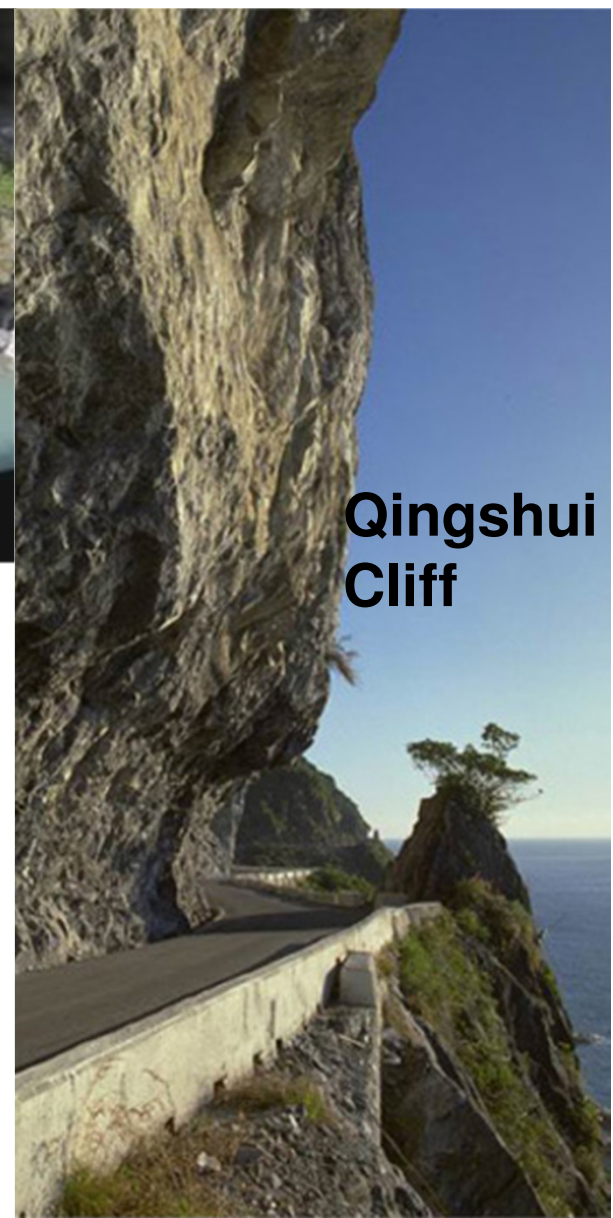




**Taroko  
Gorge**



**Liwu River**



**Qingshui  
Cliff**

## **Taroko National Park**

Taroko National Park, situated in the eastern part of the Taiwan and established on November 28, 1986, covers more than 92,000 hectares in the northern section of the Central Mountain Range. This park features high mountains and sheer gorges. Many of its peaks tower above 3,000m in elevation, with many natural wonders. The spectacular Taroko Gorge and the scenic beauty of Liwu River can be conveniently viewed from the Central Cross-Island Highway. The varied mountain peaks, numerous waterfalls, diverse plant forms and animal life, together with the indigenous Taroko people, create the rich texture of this unique natural ecosystem.



**Nanwan**



**Oluanpi Park**



## **Kenting**

Kenting is located on Taiwan's Hengchun Peninsula, which lies to the south of the Tropic of Cancer and enjoys a year-round tropical climate. The combination of imposing mountains, impressive rock formations and spectacular waves makes this a place you will never forget.



# Eslite Bookstore Tunnan (誠品敦南)





# Amazing TAIWAN



Learn more at  
<http://eng.taiwan.net.tw/>



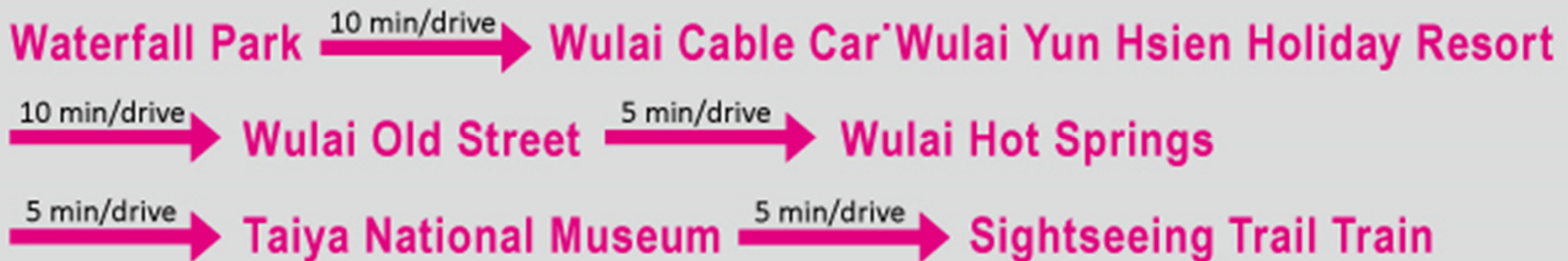
# Meet Taiwan Project Office

- Meet Taiwan Project
  - [http://www.meettaiwan.com/en\\_US/index.html](http://www.meettaiwan.com/en_US/index.html)

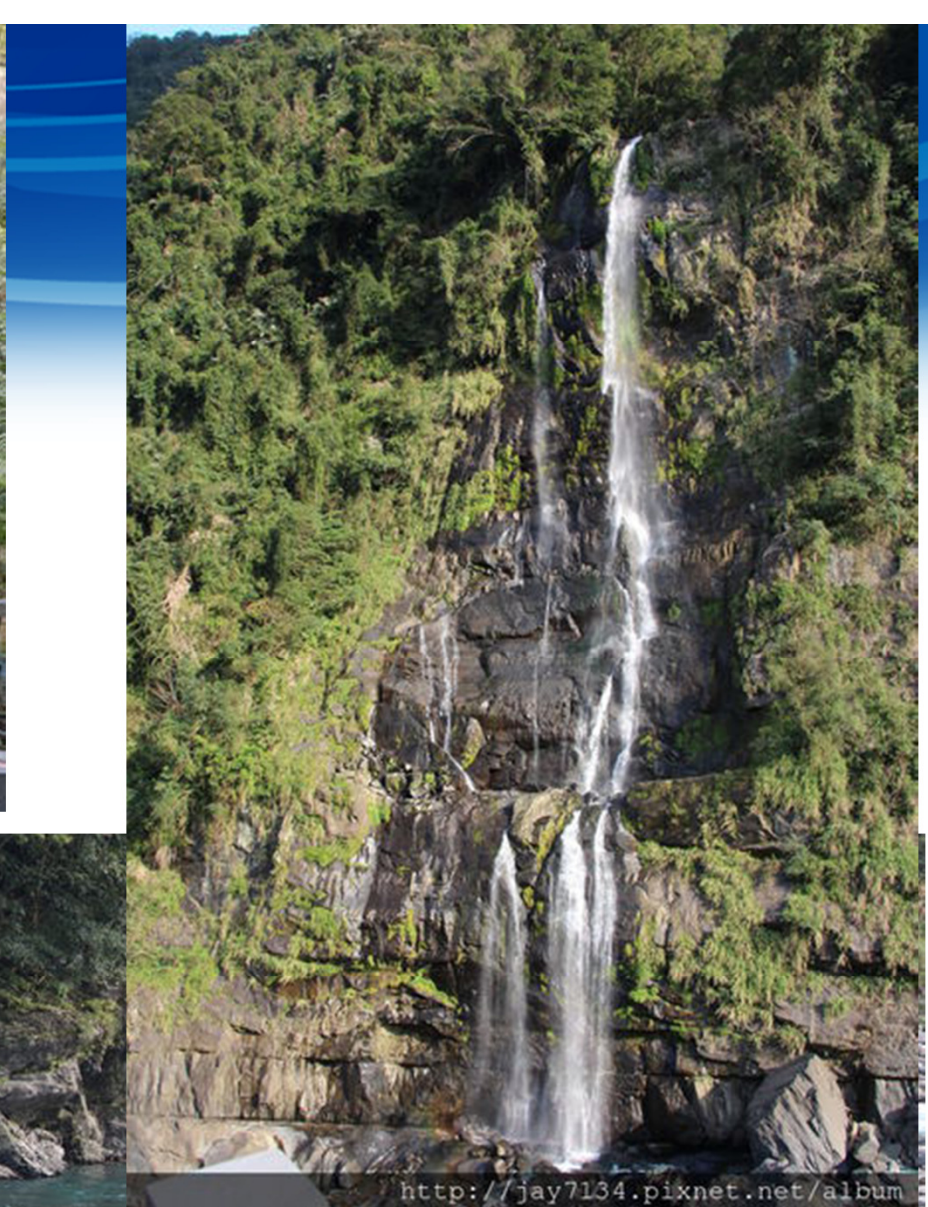


# Wulai Hot Springs

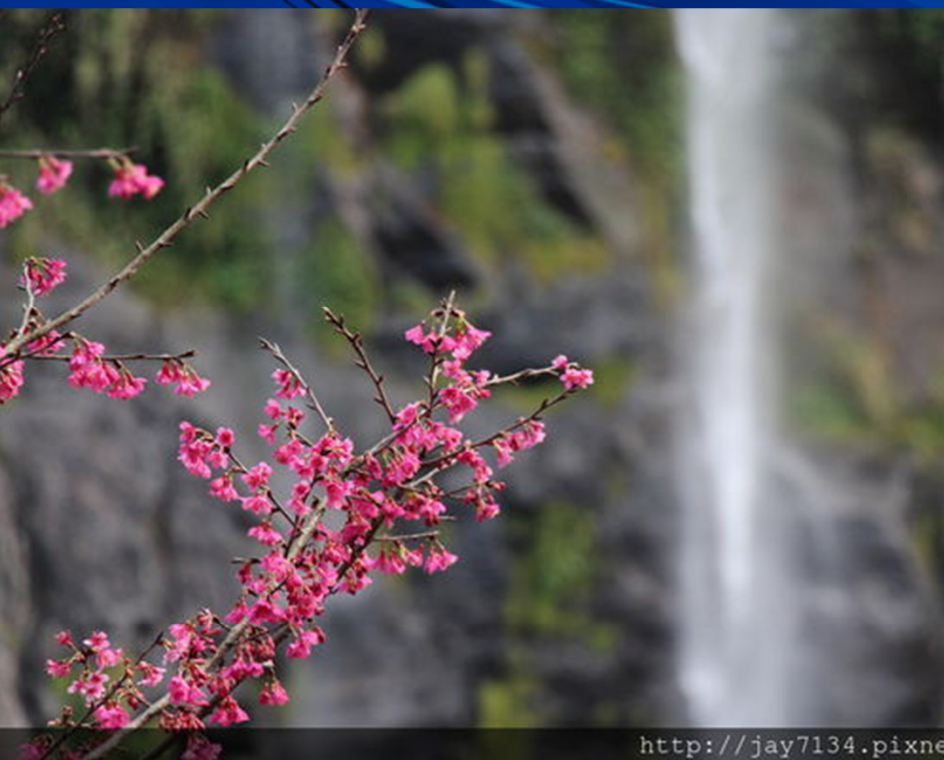
Take 849 @ MRT Gongguan Station  
It takes around 1 hr. 40 min.  
To Wulai











<http://jay7134.pixnet.net/album>



<http://jay7134.pixnet.net/album>

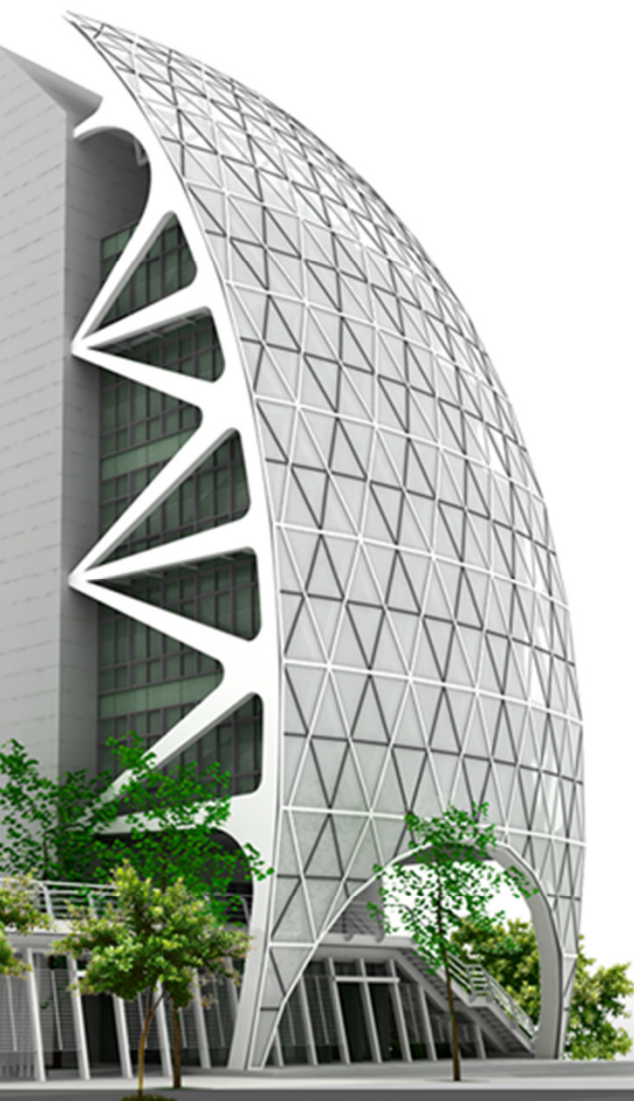


<http://jay7134.pixnet.net/album>



<http://jay7134.pixnet.net/album>





Thank you!